

DO GOOD ROSEVILLE NEWSLETTER



Year 2026

Issue 2

March 15, 2026



Operation Metro Surge unleashed a wave of fear and devastation across our community – yet from the chaos emerged something powerful: neighbors, activists, and everyday people rising together to protect and defend one another.

On one side, people have been terrified to leave their homes to go to work which means they don't have money to pay their rent.

On the other hand a collaboration of foundations, faith communities, nonprofits, local businesses, and community members have teamed up with school and city social workers to ensure our neighbors have housing stability

Love Pays the Rent

1 Community	}	500+ Donors
1 Goal		over \$210,650
1 Month		132 Households

These funds primarily covered February rent. We are now seeing that housing instability may continue through the remainder of the school year, and we urgently need continued community support to help families with March rent and other essential expenses.

HOW YOU CAN HELP:

Please help us spread the word. Share this message with 15 others who may be willing to help! Donations can be made through any of these 3 funds. They are all working together:

March Rent is Now Due

3 Ways to Help

Roseville Area School Foundation	St. Michael's Housing Stability	Roseville Lutheran: Helping Our Neighbors

Here are links to the 3 funds. All donations are tax deductible:

- > [Roseville Area Schools Foundation](#)
- > [St. Michael's Housing Stability](#)
- > [Roseville Lutheran Helping Our Neighbors](#)

Thank you again for your prayers, your advocacy, and your financial support. Together, we can continue to ensure that love truly pays the rent for families traumatized by recent events.





**Family, Friends
& Co-workers
Micro-Challenge
for "Love Pays the Rent"**

In the past, Do Good Roseville has never been an organization that seeks donations for our work. However, since the Surge began, we know we have been asking you repeatedly to give and then give more. We know that everyone is feeling tired and maxed out on many levels.

However, this need has been forced upon neighbors who are just trying to protect their families, so we thought maybe now is the time to get creative and create some Micro-challenges with your family, your friends, and even your co-workers!

Here are some ideas to get you started for rent support or other mutual aid needs that are arising in the community:

> Decide together to each donate a set amount (\$5, \$20, \$100?)



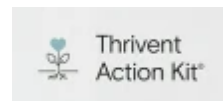
> Challenge each other to find creative resources of funds. Maybe tap into credit card cash back balances?

> Agree to donate a day or a week's worth of coffee runs or an amount equal to a dinner out.



> Encourage each other to find out if your employers have company matches to maximize your donation.

> Create a Thrivent Action Team if anyone is a member.



> See who can make the most by selling items on Facebook Marketplace or other platform.

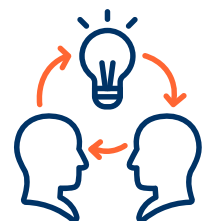
> Do a bake sale in your neighborhood, at work or at church.



> Ever tried a GoFundMe fundraiser? Try it now!

> Talk about this and share your creative ideas!

Thank you from the bottom of our hearts for any amount you can give. Every dollar makes a difference. Whether you are able to donate or not, please share this idea widely.



Create cards
for CPE
students



Create Cards for Students

Saturday, March 21

10:30 - 12:30

Board Room at Roseville Library
2180 Hamline Ave. No

Join DGR Friends of Central Park Elementary on our 3rd annual card making event! These are always great events! Students will be taking state tests beginning March 25th and we are going to write personalized cards of encouragement and support for each of the 200+ students!

Join us in the Board Room upstairs at the Roseville Library (go to left to the very back corner). We'll start at 10:30 and hope to complete them all by 12:30. Come for all or part of the event. We'll bring the note cards, markers and stickers 😊. If you have your own special supplies you are welcome to bring them!

Help Do Good Roseville



Volunteer Organizers Needed!

First meeting at 6:30 on Tuesday, March 24

We want to expand Do Good Roseville opportunities for people to volunteer. To do that, we are looking for a small group of people to become volunteer organizers in our community. These are people who will scout out opportunities, plan the details, and maybe even lead groups through a meaningful service activity.

Unlike most of our activities, this isn't about just showing up. It's about being the reason *others* show up. If you're a natural organizer, a connector, or just someone who's been wanting to do more for your community — let's talk. I'm looking for motivated people ready to take ownership of a cause they care about.

We've got a few interested people who are going to meet in the evening on Tuesday, March 24. If you'd like to join us, please email Kathy at kramundt@hotmail.com and I'll let you know where we're meeting :).

Not available that evening, send me an email and we'll find another time to connect!

Mutual Aid in Roseville

Since the beginning of Operation Metro Surge, neighbors have been helping neighbors in big and small ways. Find out more about what mutual aid can become on an ongoing basis. This is a community led effort.

Mutual Aid
for our
Immigrant Neighbors

SUPPORTING OUR IMMIGRANT COMMUNITY

Come connect with neighbors and hear about
a coordinated effort to raise support for
immigrant neighbors.

No big commitments — just conversation,
community, and creative ideas.

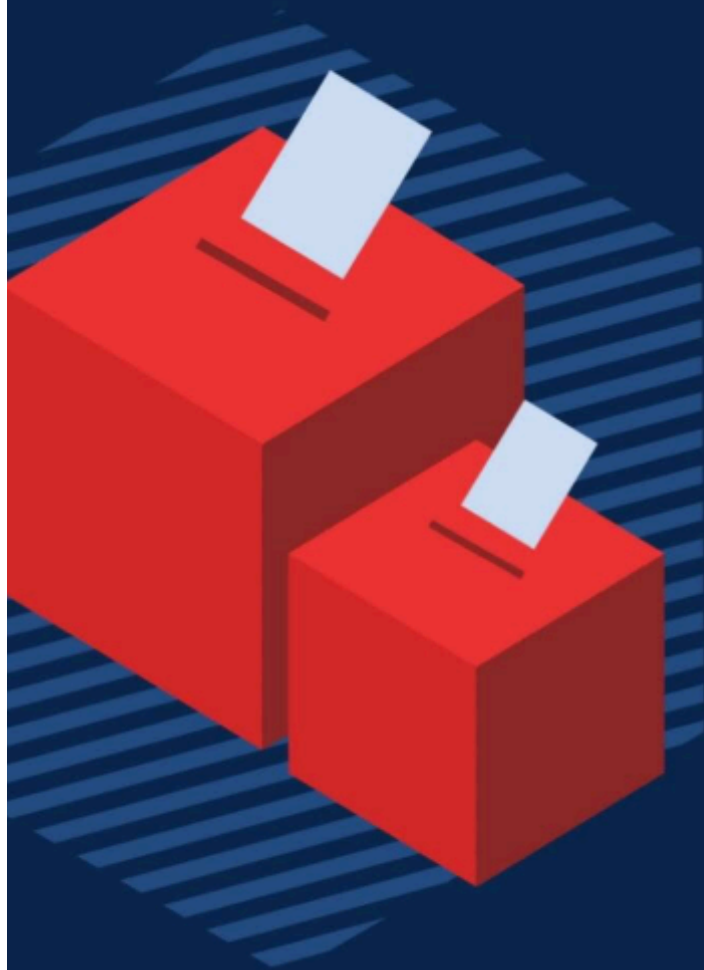
Bring a friend or neighbor.
Every small effort can make a difference.

SUNDAY, MARCH 22
6:23 PM

ST. MICHAEL'S CHURCH
1660 County B Rd W • Roseville, MN 55113

Coming Up This Month

Truth, Trust & the Ballot Box: Understanding Election Security



Join us for a conversation with election security experts on how the State of Minnesota and local governments ensure safe and secure elections.

Free and open to the public.

Tuesday, March 24
6:30 – 7:45
Doors open at 6:00

Ramsey County Library - Roseville
2180 N Hamline Ave

- Bill Ekblad, Election Security Navigator Office of MN Secretary of State
- David Triplett, Deputy Director Property Tax, Records & Election Services, Ramsey County
- Robin Johnson, Head Election Judge, White Bear Lake



Sponsored by:
League of Women Voters New Brighton Area
League of Women Voters Roseville Area
League of Women Voters St. Paul
League of Women Voters White Bear Lake Area
Ramsey County Public Library

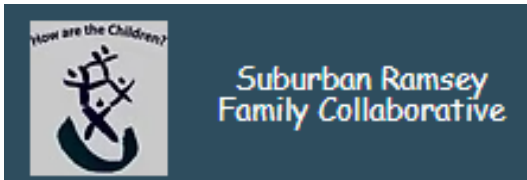
Register here:
<https://bit.ly/49MhrgB>



Please contact lwvrosevillearea@lwvmn.org if requesting ASL interpreting services, allowing for lead time.

Planting Seeds Across Ramsey County

An important part of the work Do Good Roseville does is connecting people who otherwise may not connect. We have done that for many years by connecting area faith communities. We recently hosted a meeting of all District PTAs, and will do it again after Spring Break.



Another organization in our community that has a similar mission but is much more structured is the [Suburban Ramsey Family Collaborative](#).

SRFC is a partnership of schools, county, public health, corrections, nonprofit agencies, mental health service providers, faith communities and youth organizations. Kathy recently met the new Executive Director, Jesse Everts.

SRFC works on behalf of children and families to improve formal and informal support systems with a focus on wellness, learning, safety, and security. SRFC has a wealth of resources that are updated on a daily basis. Here are links to their resource lists that are available on the first page of their website.

- > [Basic Needs Resources](#)
- > [Immigrant Rights and Legal Resources](#)
- > [Jobs & Training for Youth and Adults](#)
- > [Financial Health & Wealth Creation Resource Fair \(download pdf\)](#)

Since both of our organizations believe in the power of connecting people that might not otherwise cross paths, last week DGR and SRFC joined together to host a meeting with representatives from many of the cities in North Suburban Ramsey County. We shared some unique programs we know are happening in other cities so we called it "Planting Seeds". We highlighted programs related to food, housing, transportation and mutual aid.

Join city, school, community, faith, and nonprofit leaders to learn about recent initiatives that highlight the strength and innovation within our neighborhoods. The program will feature brief presentations and facilitated discussion focused on sharing resources, sparking new ideas, and strengthening our collective capacity to support families and build community resilience.



Some of the attendees



We had informal presentations

In the Planting Seeds meeting we discussed food, housing, transportation and mutual aid. Here are some of the resources shared in the meeting:

Food



Karl Brown shared how the [Ralph Reeder Food Shelf](#) in Mounds View operates. We also learned that Ramsey County has both list and map of food resources.

[Ramsey County Food Resources](#)

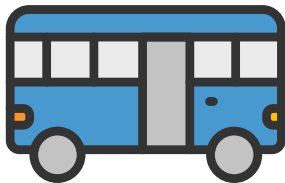
[Ramsey County Food Resource Map](#)

Housing



Cari McCollor, Housing Navigator with Roseville Police Dept shared what information about her role and the role of the other social workers from the [Community Action Team](#). Cari has been a key resource during Operation Metro Surge.

Transportation

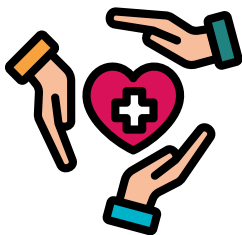


Kathy shared two of the unique transportation resources that are available in Roseville.

First there is a [Community Bus Loop by Newtrax](#). They have a shuttle bus every Tuesday that makes a route between senior housing buildings and are businesses. They may also be available to pick up seniors at their home as part of their route.

The other relatively new resource is the [Metro Micro](#) bus from Metro Transit. With this service you book a ride from wherever you are in the service area and drop you off anywhere in the same service area! The area covers the northern half of Roseville. See the link for a map.

Mutual Aid



Julie Clark, Mounds View City Council and Founder of Project Kindness + [Project Ardan](#). [Project Kindness](#) provides mutual aid for Mounds View residents. Includes food delivery from Manna Market along with mutual aid household essentials and hygiene products.

There is a group working on creating a mutual aid group in Roseville. If you're interested email Kathy at kramundt@hotmail.com to be connected.

Ramsey County Services



County Manager Ling Becker, Ramsey County told us about the variety of services that are available related to each of these topics. To find out more, go to their [Assistance and Support](#) page.

Highlighting a few things you can keep doing!

#1



Many people think the Surge is over and things are back to normal. We know that everyone's experience is different, but we also know the impacts will last for a long, long time - for some it will be forever. Let's continue to listen and share what is happening in our community.

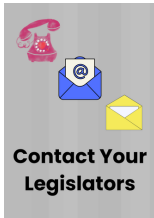


Keep checking in with people you know. Now more than ever they need to know you continue to care.



Saturday, March 28 is No Kings Rally Day at the State Capitol. For more information, go to NoKings.org. Many of our Roseville local protests are continuing.

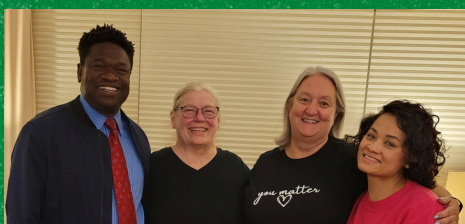
Creating chaos so we are too stunned to react to anything is the goal of the Administration. We can't let that happen! Remember: How do we eat an elephant? One bite at time.



You can do that by picking one issue each day to call your Federal or State representatives about. Don't know how to do that or having trouble keeping track of all the issues? Go to 5calls.org where they have a list of issues to choose from. They connect you to your representatives based on where you live and they also have examples of call scripts you can use to get you started. It'll take less than 5 minutes.



Keep spending your dollars where they can do the most good.



This newsletter is brought to you by: **Do Good Roseville**

www.DoGoodRoseville.com

www.facebook.com/DoGoodRosevilleMN/

For more information or to share your ideas, please contact:

Kathy Ramundt, kramundt@hotmail.com, 612-221-5451

Sherry Sanders, sanders363s@gmail.com, 651-772-3311

Etienne Djevi, etiennedjevi@gmail.com, 651-263-5669

Jeena Gurung Vomhof, je.ena.gurung@hotmail.com, 651-500-6237